

Marine Watch S Series

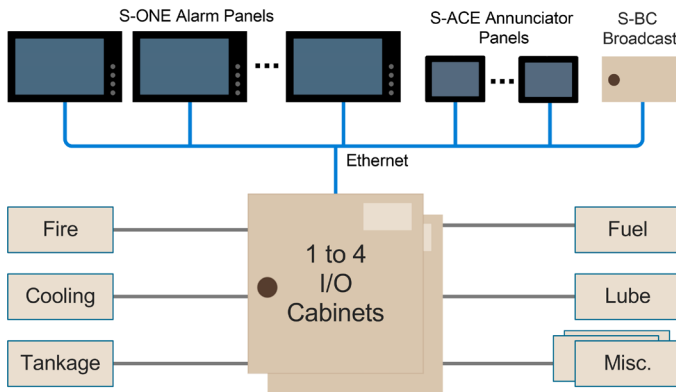
Classed Vessel Alarm System



The smarter alarm system

The Marine Watch S Series is a type approved alarm system with a user-friendly operator interface providing instant recognition of vessel status.

- Modern, large touchscreen and clear graphics gives precise information and safe decision making
- Self-configuring annunciator panels
- Distributed I/O
- SMS / email alarming
- Up-and-running in hours, not days



Modular and scalable

The system architecture is scalable and can be used in installations with several hundreds of channels.

All digital and analogue sensor signals are connected to local I/O cabinet(s). The alarm panels communicate with the I/O cabinet(s) on standard Ethernet.

Ease of installation

The system is a breeze to install. The complete system is configured on one S-ONE Alarm Panel only, without the use of extra tools. Any other panels are automatically configured over the network.

Options

The available options make the S Series system suitable for use in a wide range of crafts and applications, at sea and on shore.

Part #:
 1500082: 12V option for S-C60 and S-C120
 1500083: S-UPS Intelligent UPS Power
 2500230: S-BC Broadcast SMS/email Alarming
 1500086: S-DMO Door-mounted S-ONE
 1500090: S-AI8 Eight Analogue Inputs
 1500087: S-DO8 Eight Digital Outputs

S-ONE Alarm Panel

- Swipe and touch screen, clear graphics and intuitive design
- Timestamped event log
- Install as many panels as needed
- Optionally see or acknowledge certain groups of events
- Selection of themes and day/night modes



WxHxD: 333x202x51 mm
 13.1 x 8.0 x 2.0 in

Part #: 1500073



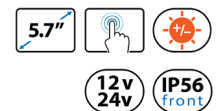
S-ACE Annunciator Panel

- Configured automatically when connected to the Ethernet
- Apply filter to see only certain groups of events
- Install as many panels as needed



WxHxD: 167 x 135 x 68 mm
 6.6 x 5.3 x 2.7 in

Part #: 1500075



S Series I/O Cabinets

- Two types: 60 or 120 switch input channels
- Support for up to four I/O cabinets in each S Series system
- Optionally, install an S-ONE in the I/O cabinet door
- Add more I/O types from the options list

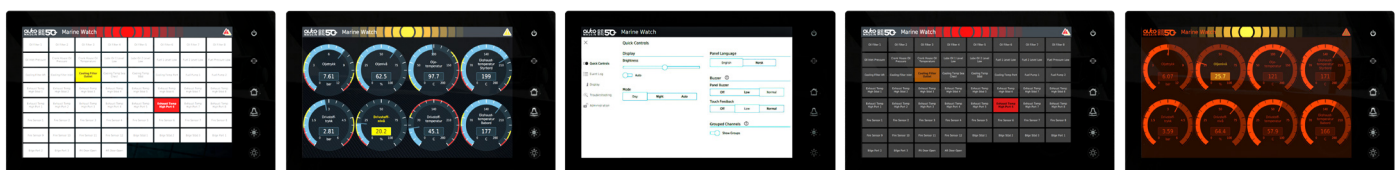


WxHxD: 600x600x210 / 600x800x210 mm
 23.6x23.6x8.3 / 23.6x31.5x8.3 in

Part #:
 1500080: S-C60 I/O Cabinet
 1500081: S-C120 I/O Cabinet



* 2 x S-AI8 gives a total of 16 flexible analogue input channels.
 * 2 x S-DO8 gives a total of 16 digital output channels.



Sales EMEA and Asia

Phone: (+47) 64 84 52 00
 Email: sales@auto-maskin.com

Sales North and South America

Phone: +1 (832) 738-1024
 Email: sales.us@auto-maskin.com

Managing Energy

www.auto-maskin.com