

| Ratio Options | 1 |
|---------------|---|
| 3PD06 | |
| 1.36 Dec. | |
| 1.29 Dec. | |
| 1.17 Dec | |
| 1:1 | |
| 1.17 Inc. | |
| 1.29 Inc. | |
| 1.36 Inc. | |
| 1.52 Inc. | |

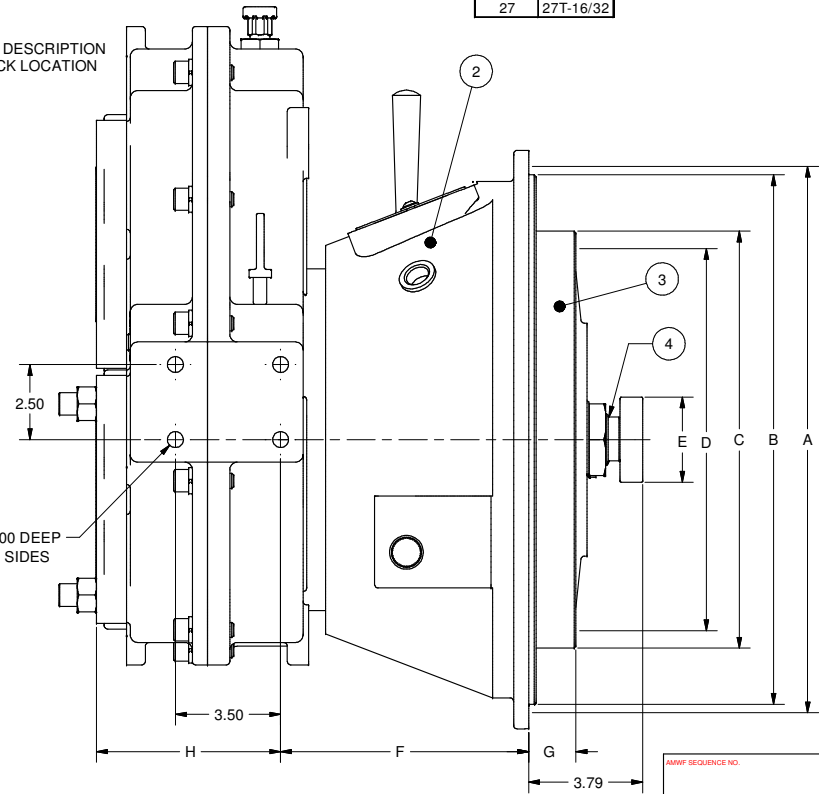
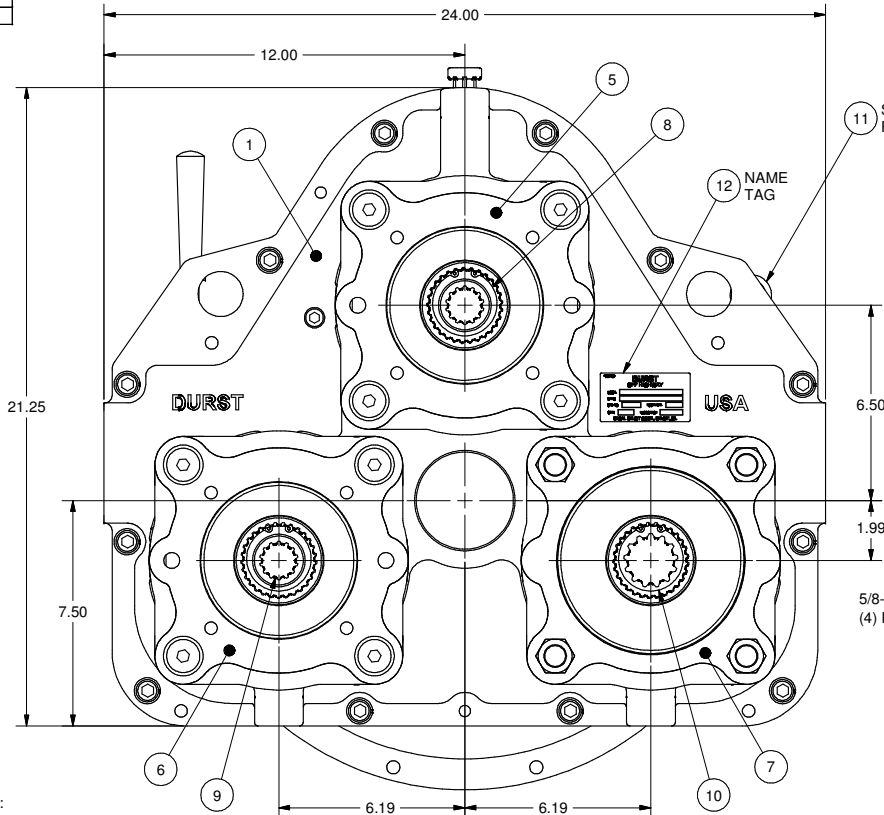
| SAE Clutch Housing Options | | | | 2 |
|----------------------------|--------|--------|------------------|---|
| SAE No. | Dim. A | Dim. B | Bolt Size & Qty. | |
| 1 | 20.875 | 20.125 | 7/16-14 (12) | |
| 2 | 18.375 | 17.625 | 3/8-16 (12) | |
| 3 | 16.875 | 16.125 | 3/8-16 (12) | |

| SAE Clutch Options | | | | | | 3 |
|--------------------|--------|--------|--------|--------|------------------|---|
| Clutch No. | Dim. C | Dim. D | Dim. F | Dim. G | Bolt Size & Qty. | |
| SP214 | 18.375 | 17.250 | 11.12 | 1.00 | (8) 17/32 | |
| SP211 | 13.875 | 13.125 | 8.25 | 1.56 | (8) 13/32 | |
| SP114 | 18.375 | 17.250 | 8.25 | 1.00 | (8) 17/32 | |
| C111 | 13.875 | 13.125 | 8.25 | 1.56 | (8) 13/32 | |
| C110 | 12.375 | 11.625 | 8.25 | 2.12 | (8) 13/32 | |

| Pilot Bearing | |
|------------------|--------|
| Std. Bearing No. | Dim. E |
| 6407 ZZ | 3.9370 |
| 6307 ZZ | 3.1496 |
| 6207 ZZ | 2.8346 |

| SAE Pump Pad Adapters | | | | | 5 | 6 | 7 |
|-----------------------|------------------|-------------|------------|--------|---|---|---|
| SAE Size | Bolt Size & Qty. | Bolt Circle | Pilot Dia. | Dim. H | | | |
| A | 3/8-16 (2) | 4.187 | 3.25 | 6.13 | | | |
| B | 1/2-13 (2) | 5.750 | 4.00 | 6.13 | | | |
| B | 1/2-13 (4) | 5.000 | 4.00 | 6.13 | | | |
| C | 5/8-11 (2) | 7.125 | 5.00 | 6.13 | | | |
| C | 1/2-13 (4) | 6.375 | 5.00 | 6.13 | | | |
| D | 3/4-10 (4) | 9.000 | 6.00 | 6.13 | | | |

| SAE Pump Spine Adapters | | 8 | 9 | 10 |
|-------------------------|---------------|---|---|----|
| SAE Size | Teeth & Pitch | | | |
| A | 9T-16/32 | | | |
| B | 13T-16/32 | | | |
| B | 15T-16/32 | | | |
| BB | 15T-16/32 | | | |
| C | 14T-12/24 | | | |
| CC | 17T-12/24 | | | |
| D | 13T-8/16 | | | |
| F | 15T-8/16 | | | |
| 21 | 21T-16/32 | | | |
| 23 | 23T-16/32 | | | |
| 27 | 27T-16/32 | | | |



NOTE:

- 1) REFER TO ASSEMBLY BOOK FOR ADAPTER MOD DRAWINGS.
- 2) LUBRICATE ALL ORINGS PRIOR TO INSTALLATION.
- 3) APPLY SILVER STREAK #200S TO EXTERNAL SPLINES OF INPUT SHAFT.
- 4) USE LOCTITE 609 WHEN INSTALLING EXP. PLUG, P/N 012043.
- 5) USE LOCTITE 609 WHEN INSTALLING DIPSTICK, AND DIPSTICK HOLE PLUG, P/N 012326.
- 6) DO NOT USE LOCTITE ON PUMP PAD SCREWS.
- 7) TIGHTEN 1/2" SCREWS: 105 FT.LBS.
- 8) TIGHTEN 5/8" SCREWS: 210 FT.LBS.
- 9) OIL MUST MEET API GL-5 SPEC: 80W90, EP90 OR EQUIVALENT.
- 10) WHEN ORDERING PARTS REFER TO THE DURST SERVICE MANUAL.

PATENT NO. 7,152,711

CAUTION

Always insure that your powertrain is free of torsional vibrations. DURST is not responsible for damage or failure due to unaddressed torsional vibrations.

| | | | | |
|-----|----------|-------------------------------|-----|----------|
| 6 | 30214 | DIM "F" FOR SP214 WAS 10.77 | KTS | 9/24/10 |
| 5 | 27444 | REVISE NOTE 9, ADD PATENT NO. | WEM | 6/5/07 |
| 4 | 25834 | UPDATED SPLINE CHART | NJS | 11/05/04 |
| 3 | 25819 | REVISED RATIO OPTIONS LIST | NJS | 10/28/04 |
| 2 | 25724 | UPDATED ITEM NUMBERS | NJS | 9/24/04 |
| 1 | 24560 | RELEASED TO PRODUCTION | WEM | 9/3/04 |
| DES | W/O. NO. | ZINC | BY | DATE |

ALL DIMENSIONS IN INCHES UNLESS OTHERWISE SPECIFIED: CASTINGS ALLOW .12 FINISH STOCK ON MACHINED SURFACES. FILLETS AND RADI: 12 MAX. MACHINING TOLERANCES: X .000 FRAC & 1/64 XX & 9/10 ANGLE & 30° XXX & .006 15°/FINCH

THIS PRINT IS CONFIDENTIAL AND IS THE PROPERTY OF DURST DIV. REGAL-BELT CO. THIS PRINT SHALL NOT BE USED, COPIED OR REPRODUCED IN WHOLE OR IN PART, NOR SHALL THE CONTENTS BE REVEALED IN ANY MANNER TO ANYONE UNLESS WRITTEN PERMISSION IS OBTAINED FROM DURST DIV. REGAL-BELT CO.

MATERIAL: _____ TITLE: 3PD06 CLUTCH CHARTED DRAWING

SCALE: 1/2:1 THIRD ANGLE PROJECT PART NO: 3PD06C SIZE: D

DURST DIVISION OF REGAL-BELT CORP. P.O. BOX 298 BELLEVILLE, MISSOURI 63011